

# K I M O



KOMMUNENES INTERNASJONALE  
MILJØORGANISASJON



## Mr Sture Hermansson for KIMO Baltic Sea

A **Growing** CONCERN 

Your local government voice  
on marine pollution

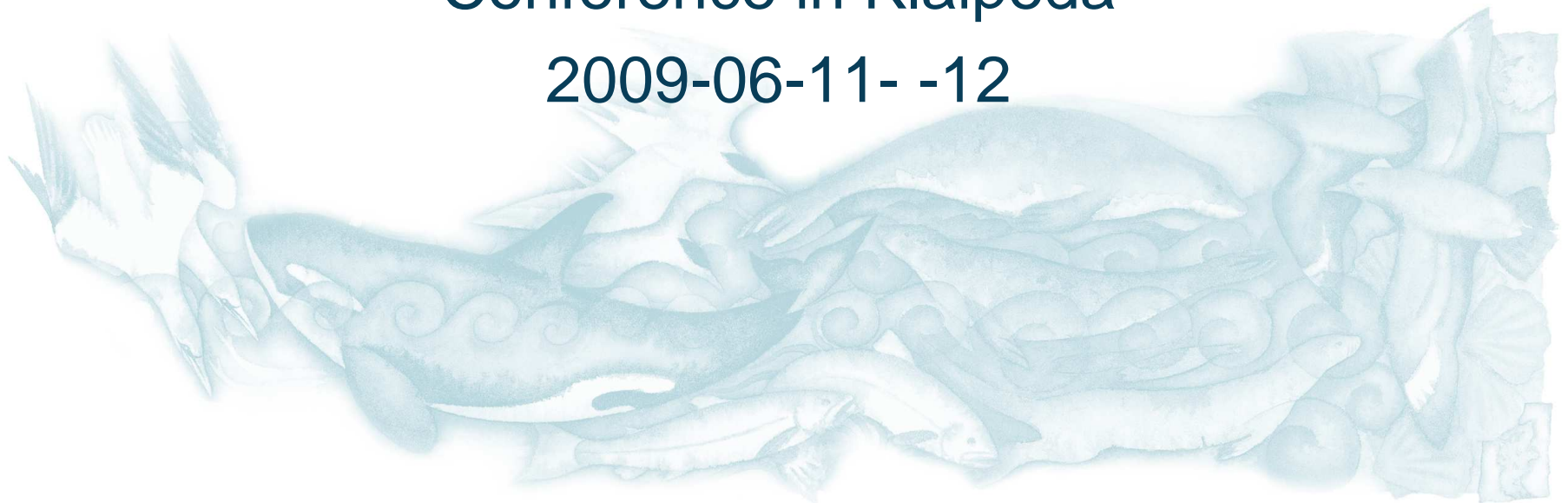


KOMMUNENES INTERNASJONALE  
MILJØORGANISASJON

# Coastal erosion

## Conference in Klaipeda

2009-06-11- -12



A **Growing** CONCERN  


Your local government voice  
on marine pollution

# Coastal erosion



KOMMUNENES INTERNASJONALE  
MILJØORGANISASJON

- ~ Ystad will apply for feasibility money to SIDA (Swedish International Development Cooperation Agency)
- ~ KIMO Baltic will be involved in the project as a facilitator
- ~ One of the objectives in the feasibility study is to form a network of municipalities facing more or less the same problems

# Coastal erosion



KOMMUNENES INTERNASJONALE  
MILJØORGANISASJON

- ~ After the Klaipeda conference working groups will be formed for delivering facts and ideas to the Lead partner Ystad
- ~ The work is scheduled to take place in the autumn of year 2009
- ~ You as participating municipality in the feasibility study will be visited of representatives from the Lead Partner

# Coastal erosion



KOMMUNENES INTERNASJONALE  
MILJØORGANISASJON

- ~ A conference will be held late 2009 for reporting the results of the feasibility study
- ~ The main objective in study is to prepare an application to the Interreg IV B Baltic Sea programme.
- ~ Time for submitting the application is not yet ready but probably at the end of 2009 or beginning of 2010

# Coastal erosion



KOMMUNENES INTERNASJONALE  
MILJØORGANISASJON

- ~ For those who wants to be a partner in the Interreg project we would like to sign a Letter of Interest showing their willingness to take an active part in the preparation of the project
- ~ See example, signed on a letter with your official letter head

# Coastal erosion Interreg IV B



~ The Interreg programme has different areas of support and what can be suitable for the problems with coastal erosion you will find in Priority 3:

~ A: Water management with special attention to challenges caused by increasing economic activities and climate changes

# Coastal erosion Interreg IVB



- ~ B: Economic management of open sea areas and sustainable use of marine resources
- ~ C: Enhanced maritime safety
- ~ D: Integrated development of off-shore and coastal areas

# Coastal erosion Interreg IVB



- ~ Probably category D in the priority 3 will be the best for coastal erosion problems
- ~ For starting a project there must be a **partnership** consisting of:
  - ~ National, regional or local authorities
  - ~ Bodies governed by public law
  - ~ Associations formed by one or several regional or local authorities or governed by public law

# Coastal erosion Interreg IV B



- ~ There will be one partner who is Lead Partner and also responsible for the project
- ~ The project will be divided in components or work packages where number 1 will be project administration and 2 Information and dissemination

# Coastal erosion Interreg IV B



KOMMUNENES INTERNASJONALE  
MILJØORGANISASJON

- ~ Normally other partners will take the responsibility for the other components
- ~ For partners from PL, LT, LV and EE there will be co-financing from ERDF with maximum 85 % of the partner budget
- ~ For partners from SE, DK, FI and DE the co-financing rate will be 75 %

# Coastal erosion Interreg IV B



- ~ The total budget for a project should be between 3 -4 million Euros and the duration of a project is normally 36 month
- ~ Own contribution can be either in cash or "in kind".
- ~ The project is divided in 5 budget lines

# Coastal erosion Interreg IV B



KOMMUNENES INTERNASJONALE  
MILJØORGANISASJON

- ~ **1 Personnel** : your own personnel cost for working in the project and unpaid voluntary work based on a written agreement
- ~ **2 External services**: work done by an external expert, consultant or other supplier (national and community public procurement rules)

# Coastal erosion Interreg IV B



KOMMUNENES INTERNASJONALE  
MILJØORGANISASJON

- ~ **3. Travel and accomodation:** travel costs, accomodation and subsistence allowances for project staff
- ~ **4 Equipment and investment:** office and work equipment, exhibition material. All investments must be of transnational relevance

# Coastal erosion Interreg IV B



- ~ **5 Other direct cost:** direct office running costs and service charges (rent of premises); financial charges and fees for taking part in events relevant for the project

# Coastal erosion Interreg IV B



KOMMUNENES INTERNASJONALE  
MILJØORGANISASJON

- ~ **Cost Sharing:** All partners will have to pay a part of their budget to Lead Partner for project administration and for information/dissemination. From experience this will normally be between 10-15 % percent of the budget sum

# Coastal erosion Interreg IV B



KOMMUNENES INTERNASJONALE  
MILJØORGANISASJON

- ~ For a successful project there must be at least partners from 3 different countries (more partners probably easier for approval)
- ~ The project will have three (3) regions where pilot actions will take place and they will serve as examples for the other partners which can be implemented in their own region

# Coastal erosion Interreg IV B



KOMMUNENES INTERNASJONALE  
MILJØORGANISASJON

~ If you have any question concerning Interreg IV B Baltic Sea as funding programme or how to write/construct an application fell free to call me or send me an e-mail.

~ Sture Hermansson

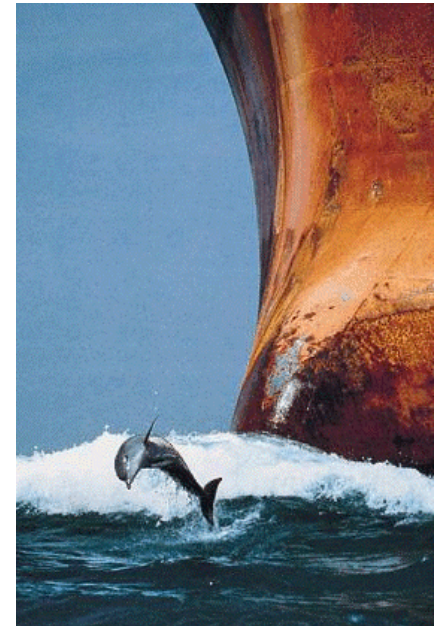
~ Phone:+46705932051

~ [Brantevik.hast.juridik@gmail.com](mailto:Brantevik.hast.juridik@gmail.com)

# K I M O



KOMMUNENES INTERNASJONALE  
MILJØORGANISASJON



[www.kimobaltic.eu](http://www.kimobaltic.eu)

A **Growing** CONCERN 

Your local government voice  
on marine pollution